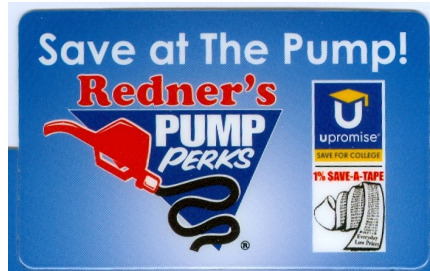


Redner's Save -a-Tape Program Comes to the Reading Public Library

1. Sign up for a Redner's gas card if you do not already have one.

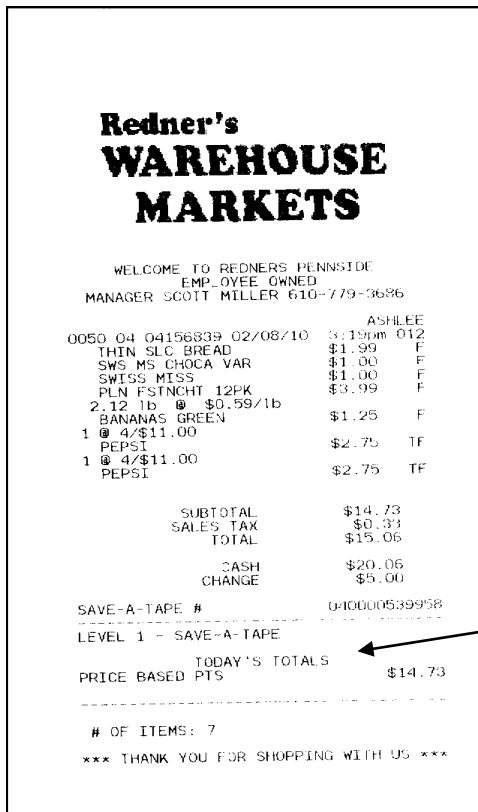


2. Be sure to give the cashier your card before you start to check out.

3. Bring in your *complete* register receipt to the Library and put it in the designated Redner's receipt box located at the Circulation Desk.

4. Redner's donates a percentage of the receipt total to the Library.

5. What a wonderful and easy way to help fund RPL.



**YOU MUST GIVE US
THE WHOLE
RECEIPT.**

**YOU MUST HAVE THIS
BOTTOM PORTION OF THE
RECEIPT FOR IT TO
COUNT.**